



BIM User Guide

BAUDER

BauderSOLAR

Revit 2018



BIM components from www.bimstore.co

The component(s) you have downloaded from www.bimstore.co have been created by our in-house team of specialists. This download contains a manufacturer specific BIM component and render materials (if applicable).

This user guide has been included to provide guidance on how to correctly use and make the most of the component.

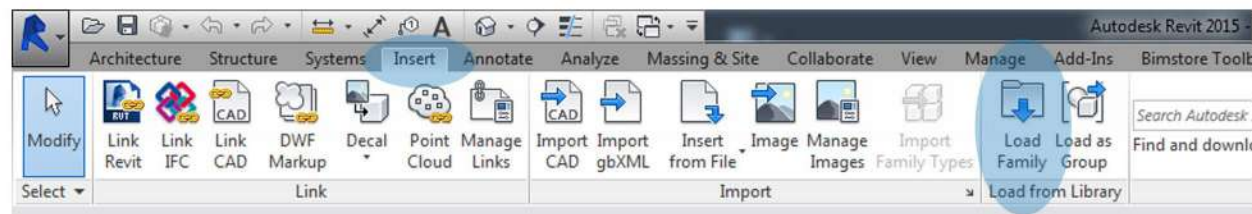
If the download contains manufacturer specific render materials, Revit will try and find the material images automatically on your computer in the following directory;

C:\LocalRVT\Bimstore\Materials\Bauder

Loading the component(s) into your project

You can load the chosen component into your project using the following method;

1. Open the Revit file containing your 'project' (.rvt) and navigate to an appropriate view.
2. Go to the insert tab on the Revit ribbon and select 'Load Family'.



3. Navigate to the location of the saved component that you have downloaded, select the desired component and click 'Open'. (Please note: it is vital that if there was a .txt file included in the original download that this file is in the same location as the .rfa file and they both are named the same.)

4. The component is now embedded into your project and ready to be placed. They can be selected from the Architecture Tab / Components within your BIM project.

Placing the component(s)

The component(s) can be selected by choosing the Component button in the Architecture tab and selecting the family from the Type Selector drop down in the Properties Box and dragged into your model and placed. The component is face based so will sit on a fac or workplane.

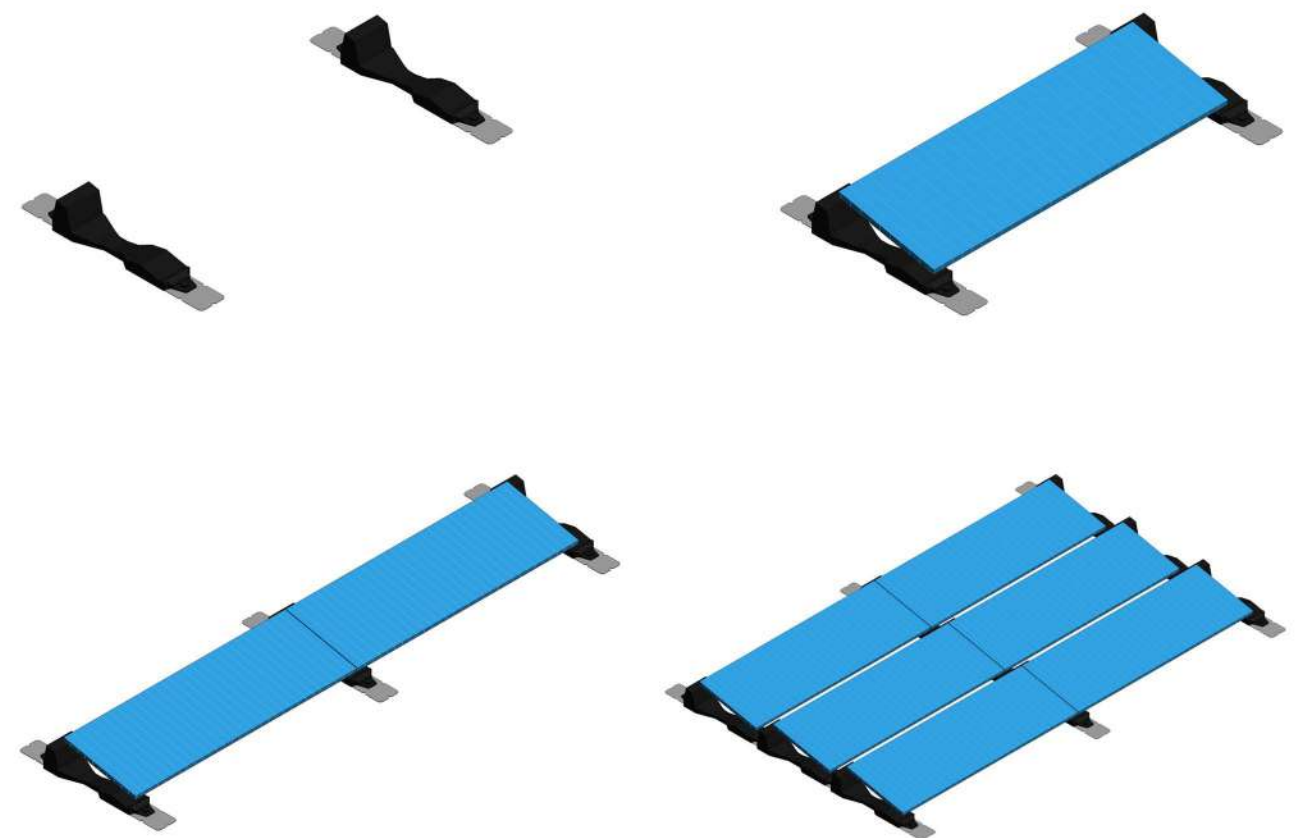
Manufacturer Specific Data

The component(s) contain technical and manufacturer specific data to assist the user when creating their project and/or when scheduling the component(s). To access the data embedded into the component(s), including COBie data, select the component and click the Edit Type button at the head of the Properties Box.

Using the Component(s)

bimstore component(s) offer a range of options which been built into the component. To access these and apply please use the following method:

1. Go to a suitable view and select the component.
2. Once the family is selected, the Properties Box will appear on the screen.
3. Under the heading Construction are the parameters 'NoOfBracketColumns' & 'NoOfBracketRows', input the number of brackets you require horizontally (Columns) and vertically (Rows). This will also update the number of solar panels shown (Providing 'PVPanelsVisible' is selected).
4. Use the parameter 'BracketColumnCentres' under Dimensions to control the setting out centres of the brackets (columns).
5. Under the heading Materials & Finishes, change the material of the membrane patch to suit the roof finish.
6. Under the heading Other are the instance parameters to be filled in for facilities management purposes.



Other Notes

These components are for design intent only and the data contained within should be treated as such. Please contact the manufacturer for more details and product literature.

You can add this component to your company template file, they will then be available without loading when starting a new project.



Spaceworks
Benton Park Road
Newcastle Upon Tyne
NE7 7LX

+44(0)844 800 6660
info@bimstore.co.uk
www.bimstore.co

© copyright bimstore 2019

