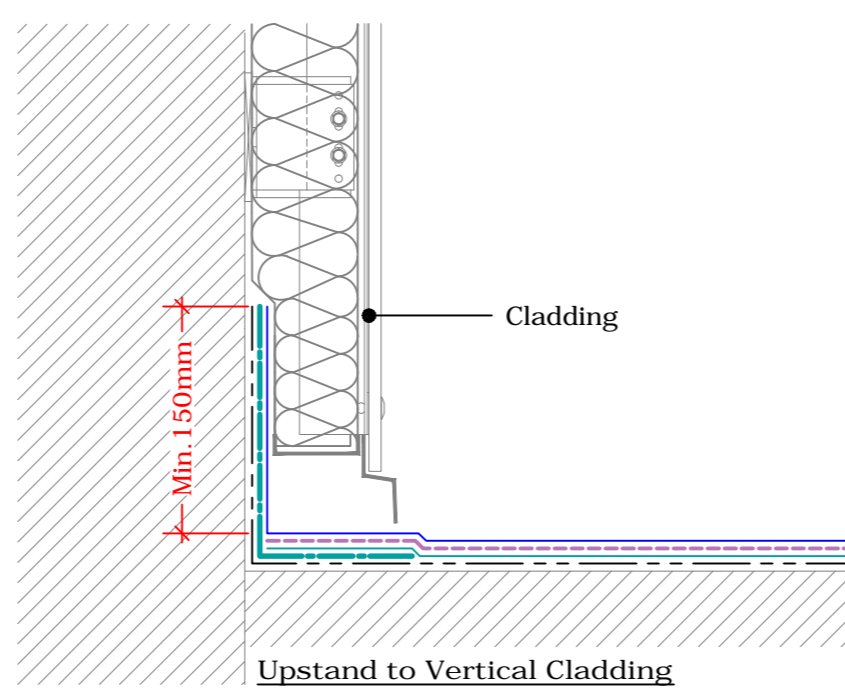
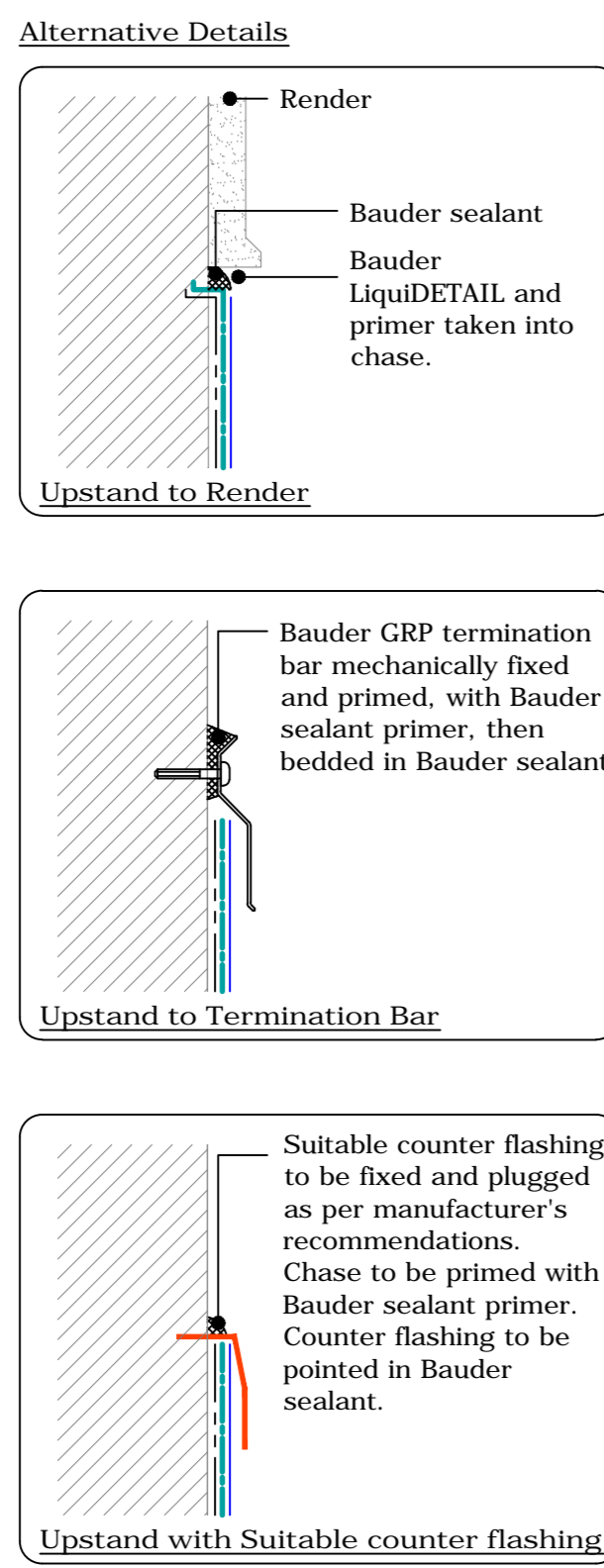
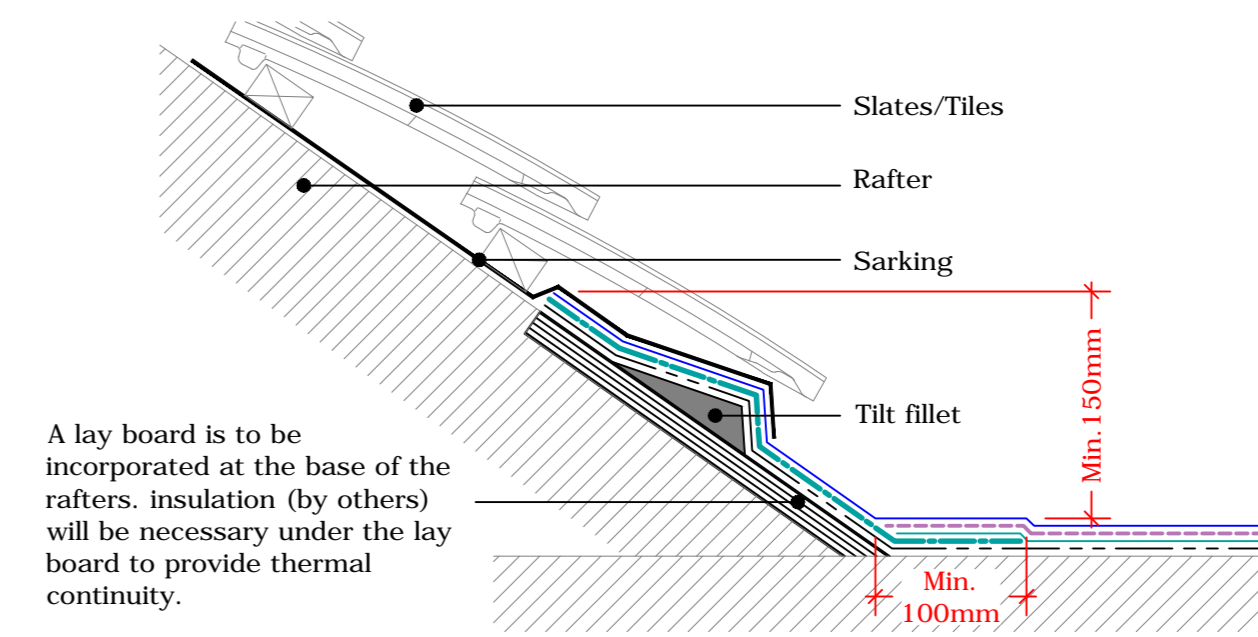
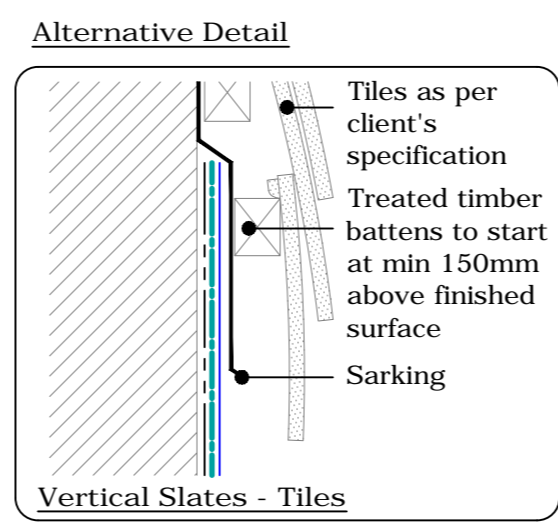


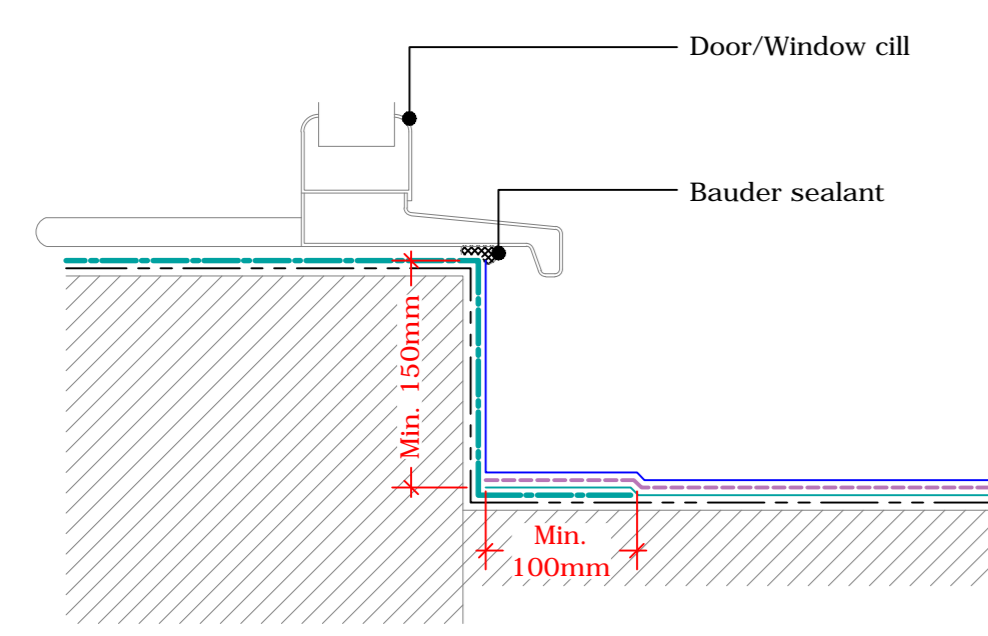
**Upstand Option**  
(Drg.No: D0801-00C\_101\_001)



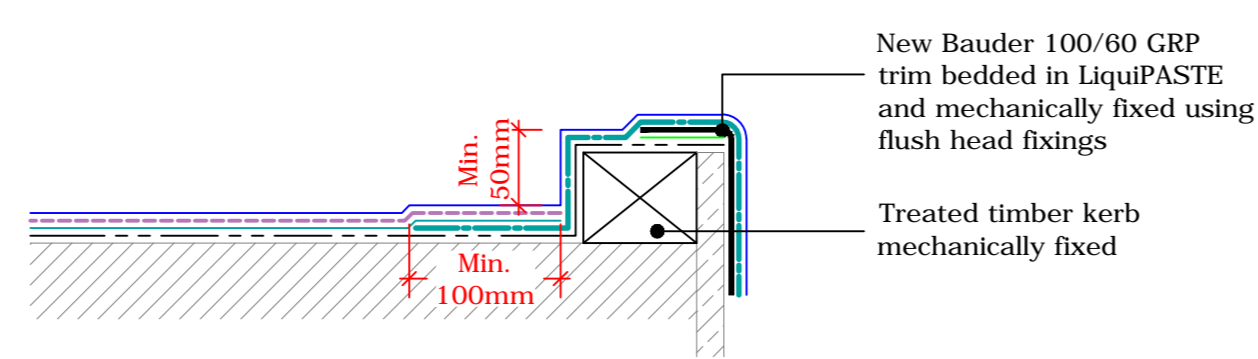
**Upstand to Vertical Cladding or Slates/Tiles**  
(Drg.No: D0801-00C\_101\_002)



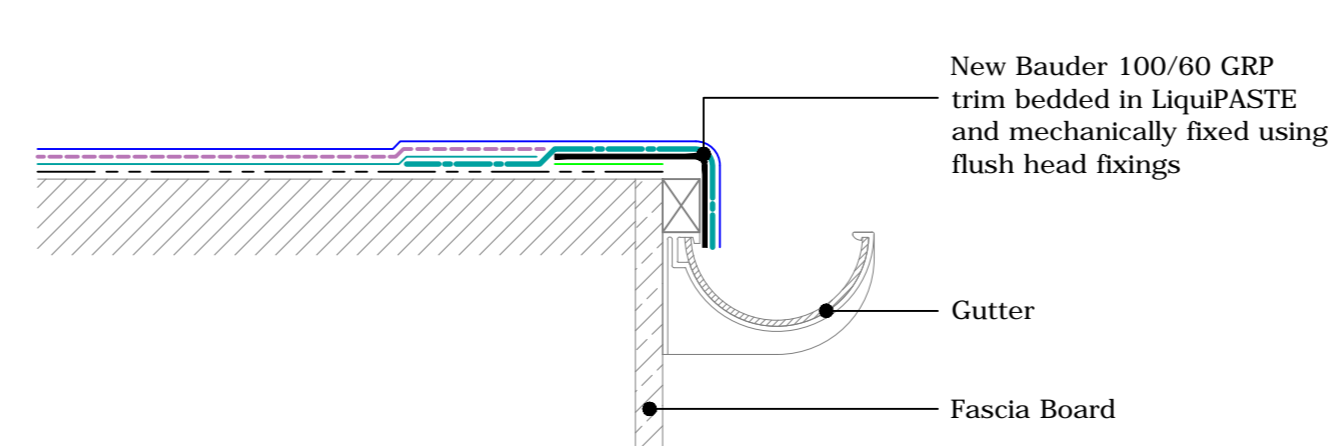
**Upstand to Pitched Roof**  
(Drg.No: D0801-00C\_101\_004)



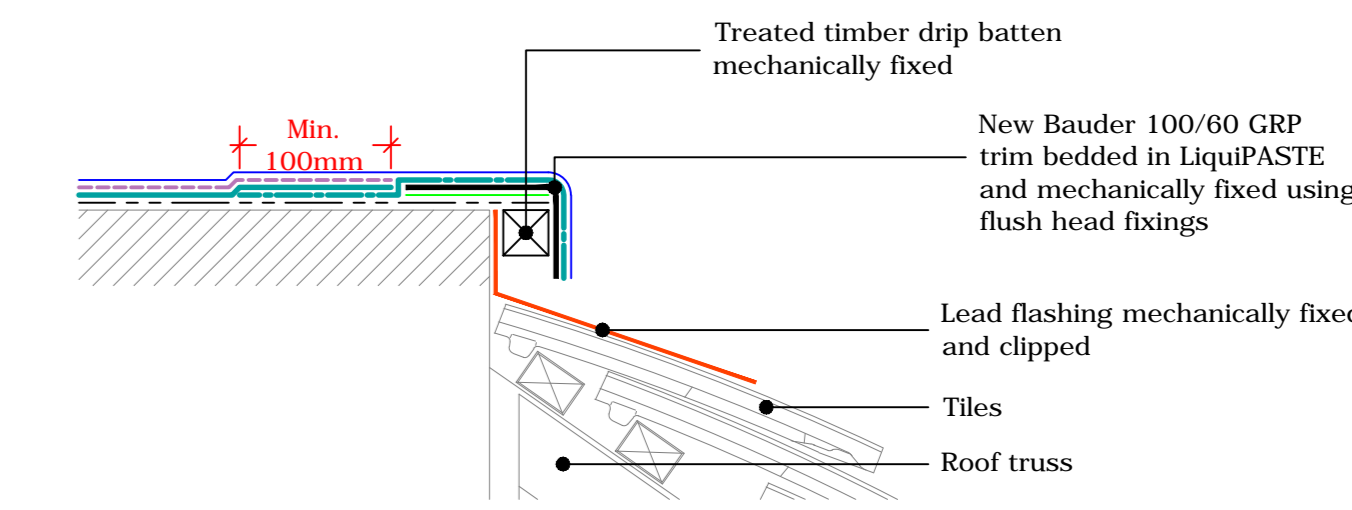
**Upstand to Raised Cills**  
(Drg.No: D0801-00C\_101\_003)



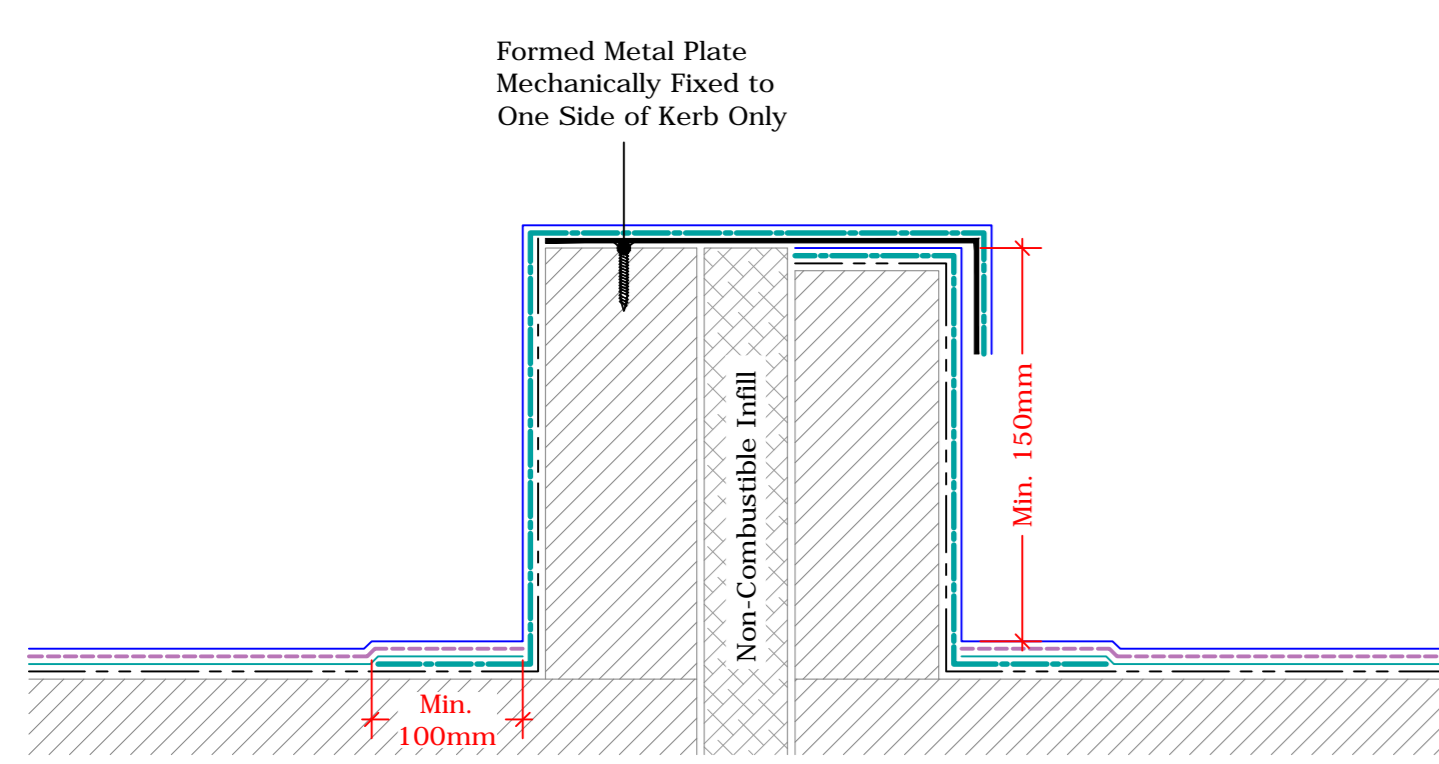
**Perimeter Kerb**  
(Drg.No: D0801-00C\_102\_001)



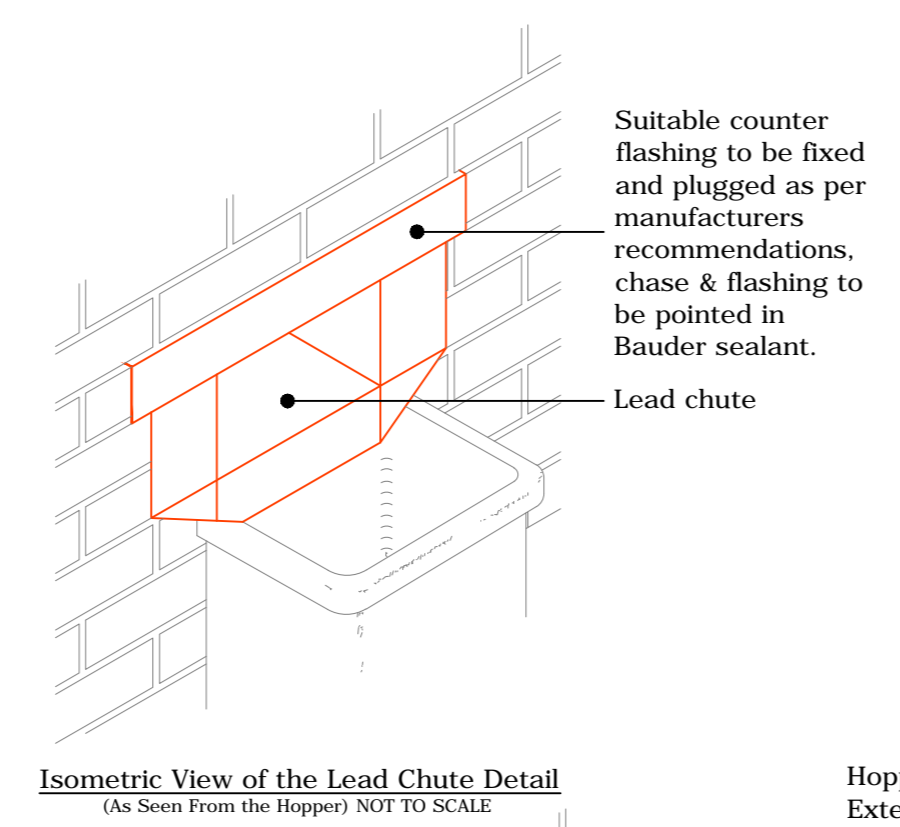
**External Gutter**  
(Drg.No: D0801-00C\_106\_005)



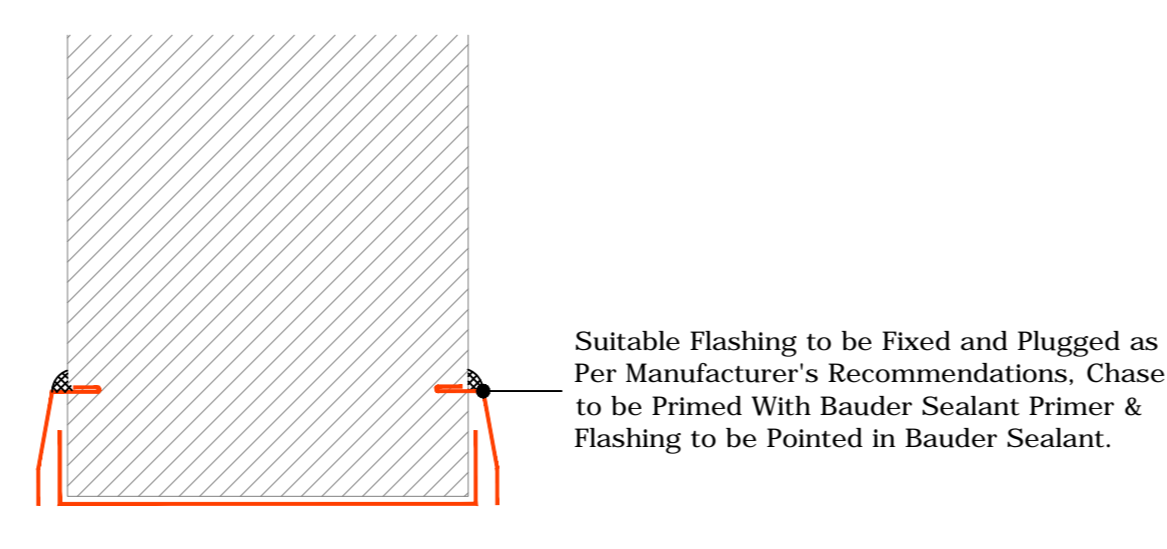
**Mansard Roof**  
(Drg.No: D0801-00C\_106\_007)



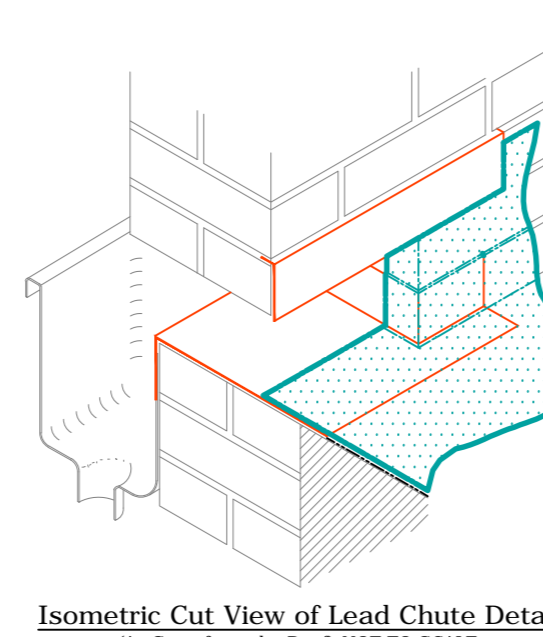
**Twin Kerb Expansion Joint**  
(Drg.No: D0801-00C\_104\_004)



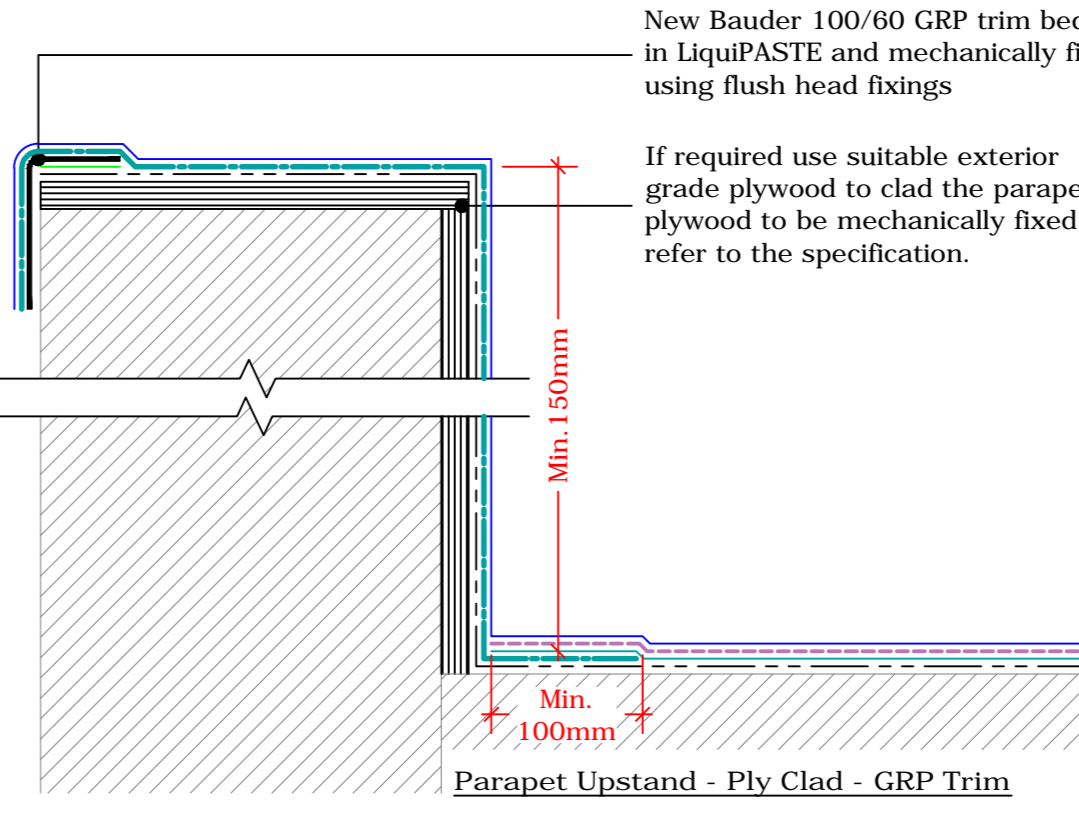
**Isometric View of the Lead Chute Detail**  
(As Seen From the Hopper) NOT TO SCALE



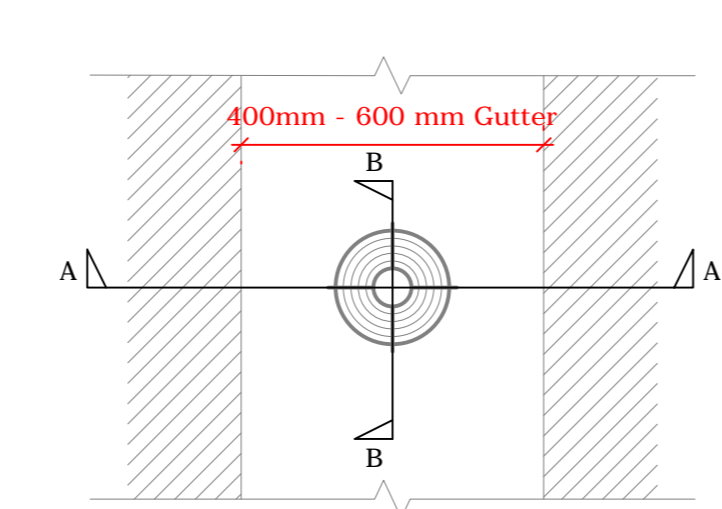
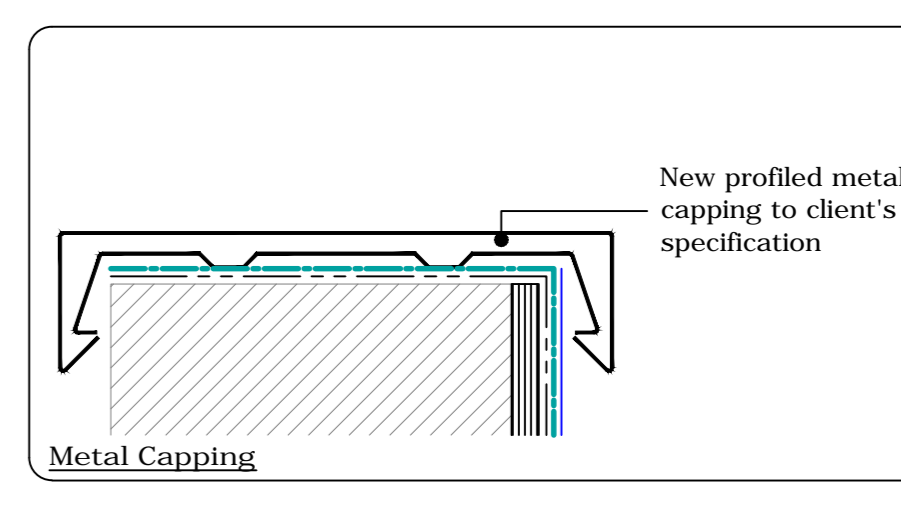
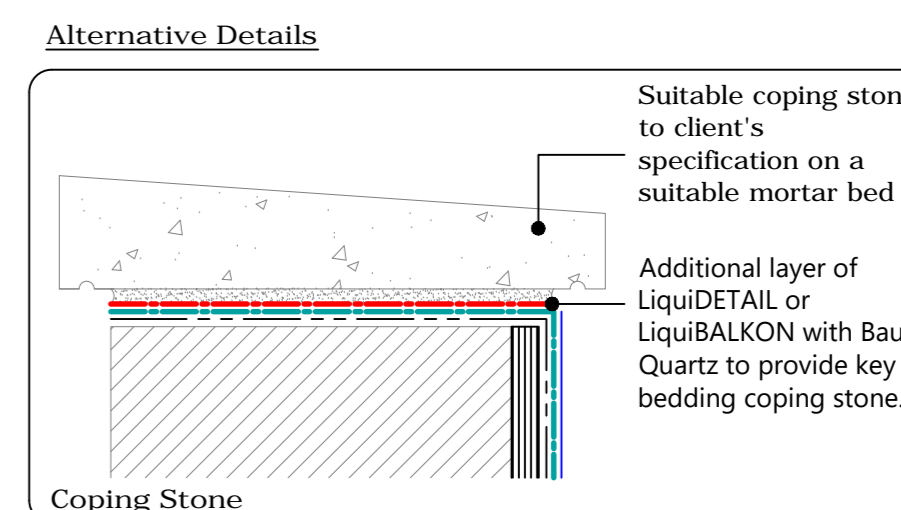
**Upstand - Lead Chute**  
(Drg.No: D0801-00C\_106\_002)



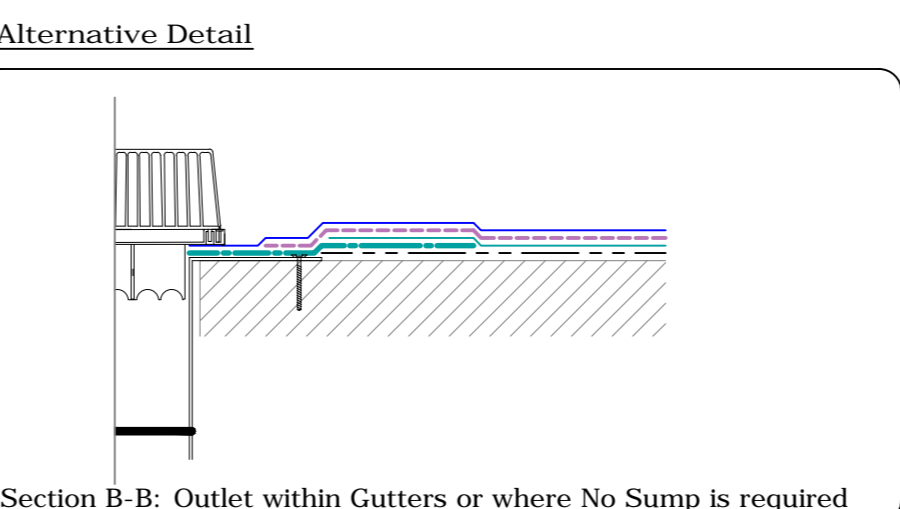
**Isometric Cut View of Lead Chute Detail**  
(As Seen from the Roof) NOT TO SCALE



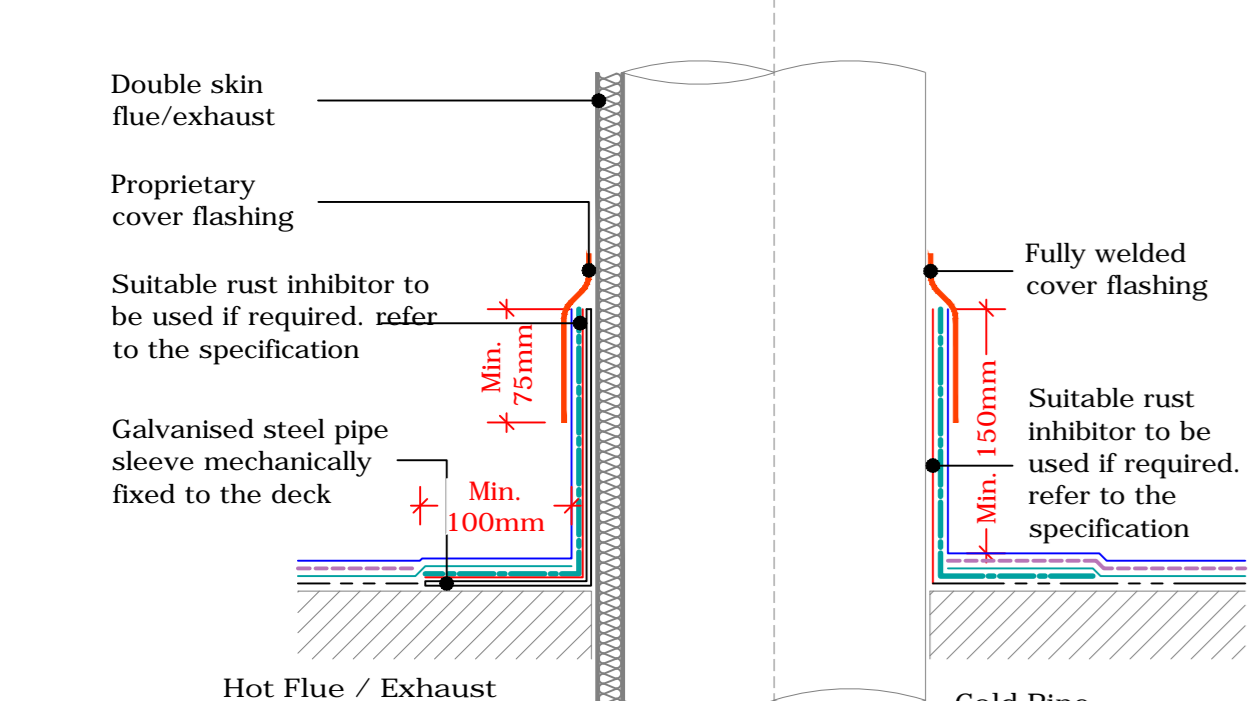
**Parapet Upstand**  
(Drg.No: D0801-00C\_103\_001)



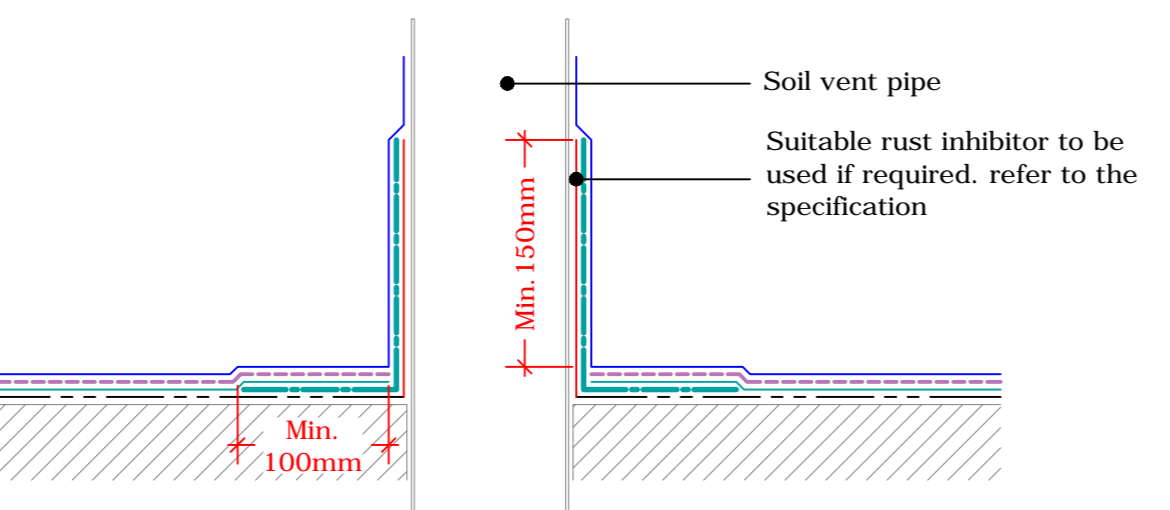
**Plan View - Gutter**  
N/S



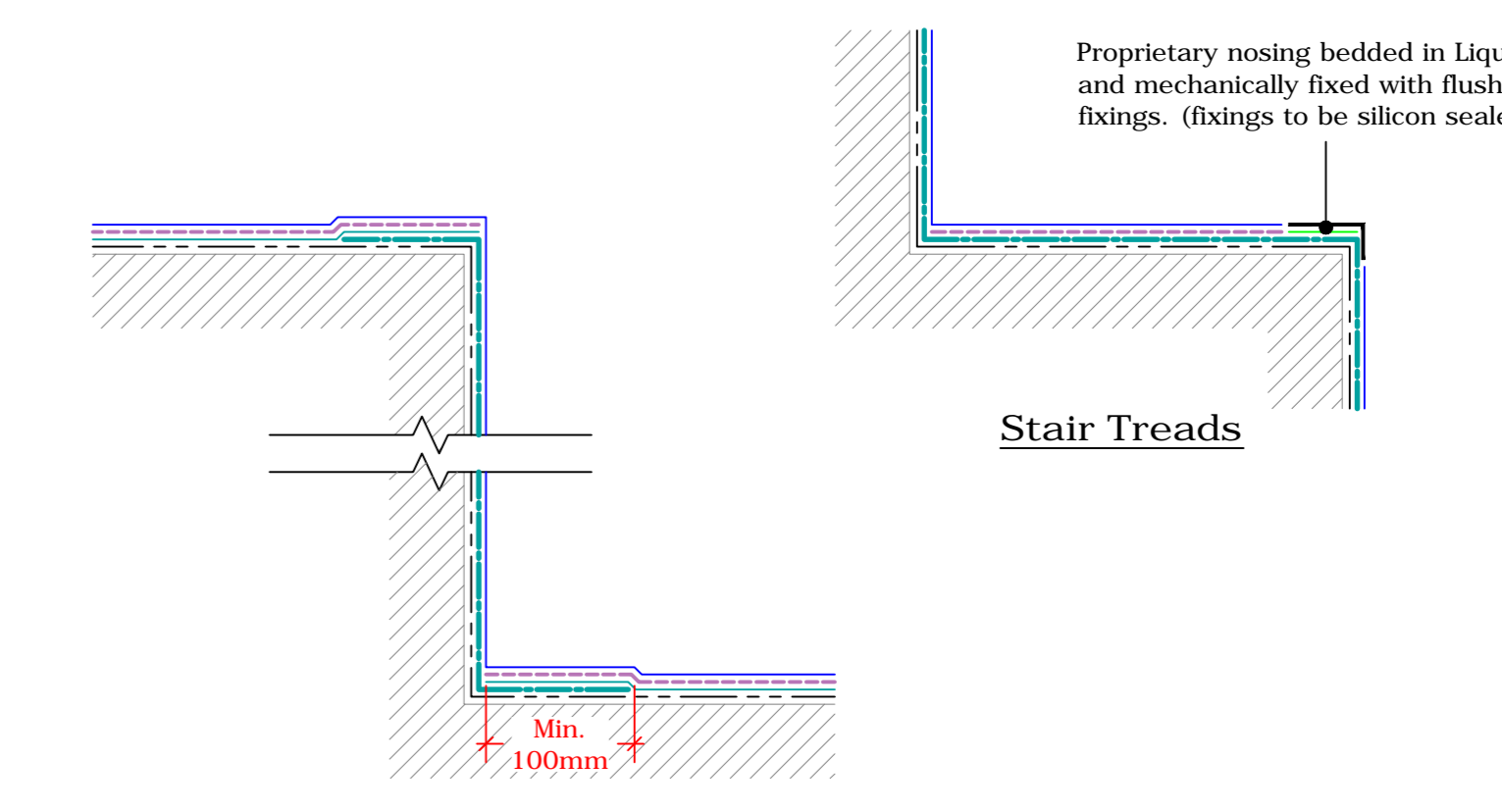
**Bauder Thermofol Rigid PVC Outlet**  
(Drg.No: D0801-00C\_106\_001)



**Upstand to Hot Flue / Exhaust and Cold Pipe**  
(Drg.No: D0801-00C\_107\_002)



**Soil Vent Pipe**  
(Drg.No: D0801-00C\_107\_001)



**Change In Levels**  
(Drg.No: D0801-00C\_110\_001)

**Key**

- Bauder LiquiFINISH
- Bauder LiquiTEC Systems
- Bauder LiquiPAVE RF with Bauder Quartz
- Bauder LiquiBALKON
- Bauder LiquiDETAIL
- Bauder LiquiPRIME
- Bauder LiquiPASTE
- Deck / Substrate

- IMPORTANT NOTES:**
- This detail is suitable for the following Bauder Systems:
  - This Drawing Shows Alternative Options. For the Correct Solution to be Used, Refer to the Project Specific Specification.
  - Do not scale to ascertain dimensions.
  - All dimensions to be checked and verified on site prior to commencement of work.
  - This drawing is to be read in conjunction with the specification and associated drawings.
  - This detail is a guideline only, representing typical detailing conditions and illustrate the correct application of the above Bauder Systems. It may be necessary to modify this detail to suit specific project design constraints and conditions.
  - Refer to the Bauder Specification for the product description and method of application. For clarity the method of attachment has not been shown.
  - Provision should be made by the installer for mechanically fixing the top leading edge of all opened details in excess of 250mm in height using appropriate fasteners.



**UK OFFICE**  
Bauder Limited  
70 Lambour Road, Ipswich,  
Suffolk, IP1 0DL  
Tel: +44 (0) 1473 257671  
Fax: +44 (0) 1473 257671  
Email: technical@bauder.co.uk  
bauder.co.uk

**IRELAND OFFICE**  
Bauder Limited  
O'Duffy Centre, Cross Lane,  
Carrigrohane, Co. Wexford,  
Ireland  
Tel: +353 (0) 42 8662 333  
Fax: +353 (0) 42 8662 830  
Email: technical@bauder.ie  
bauder.ie

**LiquiTEC - REINFORCED - TYPICAL DETAILS**  
(Balcony, Walkway & Terrace)

Scale	Drawing No.	Revision	Date
1:5	D0801-00C_100_001	D	
Drawn By	Checked By	Approved By	Issue No.
CD	PH	MB	28.10.21