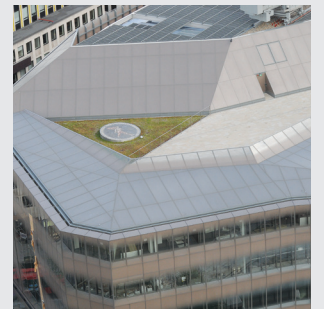


ONE NEW CHANGE



BAUDER BUILDING BOARD

Project	One New Change
Investor	British Land Securities
Place	St Paul's London
Area Size	3,200m ²
Architect	Jean Nouvel
Contractor	Bovis Lend Lease



APPLIED PRODUCTS

Bauder Bakor hot melt structural waterproofing with root resistant AP2 protection membrane for the sedum vegetation blanket areas. The waterproofing is installed in two layers sandwiching a reinforcement sheet to create a monolithic covering with no seams.

ONE NEW CHANGE, ST PAUL'S, LONDON

A winner in the London category of 2011's Royal Institute for British Architects (RIBA) Awards, One New Change is a landmark retail and office development located to the east of St Paul's Cathedral in London.

Sustainability was at the core of the design of One New Change, with Land Securities, the building's owner, specifying the use of a range of renewable sources, including solar control glazing, geothermal heating technology and a large green roof area which is open to the general public. The green roof, which was designed and installed by Bauder, features a series of stepped terraces and was created to encourage biodiversity in the centre of the City. These terraces and a new café/bistro, also sited on the roof, will provide the public with a place to eat and meet with the benefit of unique views across the City and the Thames, as well as a birds-eye view of St Paul's. Standing at 560,000 sq feet, the equivalent of over 12 football pitches, the iconic building incorporates office space for over 3,000 staff and offers shoppers a wide range of leading retail brands.

BAUDER

UNITED KINGDOM

Bauder Limited

70 Landseer Road, Ipswich, Suffolk IP3 0DH, England

T: +44 (0)1473 257671 E: info@bauder.co.uk

bauder.co.uk

IRELAND

Bauder Limited

O'Duffy Centre, Cross Lane, Carrickmacross, Co. Monaghan, Ireland

T: +353 (0)42 9692 333 E: info@bauder.ie

bauder.ie